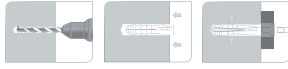


**PE PLUG**  
WITHOUT FLANGE

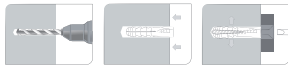


available colors:



Ø	↗	Ø screw		REFERENCE #
5	22	-	5	MXM-PPW-005
6	30	3 à 4	6	MXM-PPW-006
7	30	4 à 5	7	MXM-PPW-007
8	40	5 à 6	8	MXM-PPW-008
10	44	6 à 8	10	MXM-PPW-010
12	57	-	12	MXM-PPW-012
14	65	-	14	MXM-PPW-014

**PE PLUG**  
WITH FLANGE

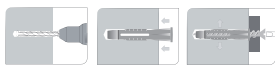


available colors:



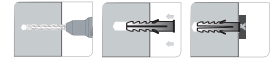
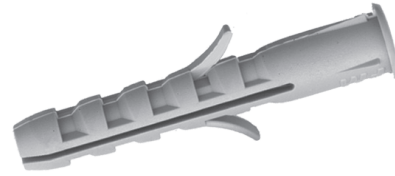
Ø	↗	Ø vis		Failure charge			REFERENCE #
				concrete	brick	hollow brick	
5	22	-	5	-	-	-	MXM-PPF-005
6	30	3 à 4	6	50	40	15	MXM-PPF-006
7	30	4 à 5	7	55	45	20	MXM-PPF-007
8	40	5 à 6	8	60	50	35	MXM-PPF-008
10	44	6 à 8	10	90	80	40	MXM-PPF-010
12	57	-	12	-	-	-	MXM-PPF-012
14	65	-	14	-	-	-	MXM-PPF-014

**EXPANSION PLUG**



Ø	↗	Ø screw		Failure charge			REFERENCE #
				concrete	brick	hollow brick	
6	36	4.00 - 4.5	6	140	110	20	MXM-EP-006
8	50	5.00 - 6.00	8	200	150	45	MXM-EP-008
10	60	6.0 - 7.00	10	300	160	45	MXM-EP-010

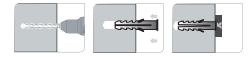
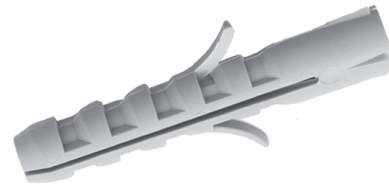
**UNIVERSAL PLUG**  
WITH FLANGE



**PA6 or PE**

Ø	↗	Ø screw		Failure charge		REFERENCE #
				concrete	hollow brick	
4	20	2.0 - 3.0	4	75	40	MXM-UP-004
5	25	2.5 - 4.0	5	140	100	MXM-UP-005
6	30	3.5 - 5.0	6	200	150	MXM-UP-006
7	35	4.0 - 5.5	7	220	200	MXM-UP-007
8	40	4.5 - 6.0	8	330	300	MXM-UP-008
10	50	6.0 - 8.0	10	600	340	MXM-UP-010
10	60	6.0 - 8.0	10	600	-	MXM-UPL-010
12	60	8.0 - 10.0	12	900	-	MXM-UP-012
14	80	10.0 - 12.0	14	1150	-	MWM-UP-014

**UNIVERSAL PLUG**  
WITHOUT FLANGE

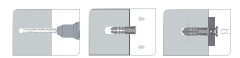
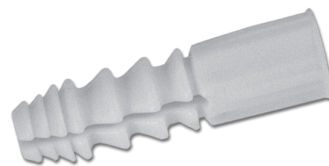


**PA6**

Ø	↗	Ø screw		Failure charge		REFERENCE #
				concrete	hollow brick	
4	20	2.0 - 3.0	4	75	40	MXM-UPF-004
5	25	2.5 - 4.0	5	140	100	MXM-UPF-005
6	30	3.5 - 5.0	6	200	150	MXM-UPF-006
7	35	4.0 - 5.5	7	220	200	MXM-UPF-007
8	40	4.5 - 6.0	8	330	300	MXM-UPF-008
10	50	6.0 - 8.0	10	600	340	MXM-UPF-010
10	60	6.0 - 8.0	10	600	-	MXM-UPFL-010
12	60	8.0 - 10.0	12	900	-	MXM-UPF-012
14	80	10.0 - 12.0	14	1150	-	MXM-UPF-014
16	80	12.0 - 14.0	16	1100	-	MXM-UPF-016

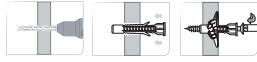
**B-PLUG**

WITHOUT FLANGE



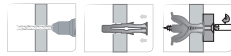
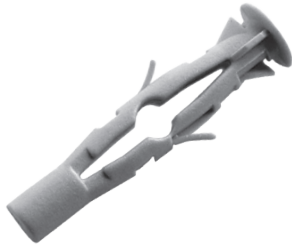
Ø	↗	Ø screw		Failure charge		REFERENCE #
				concrete	hollow brick	
5	25	2.5	5	-	-	MXM-BP-005
6	30	3 to 5	6	-	-	MXM-BP-006
8	40	5 to 6	8	-	-	MXM-BP-008

**E-PLUG**



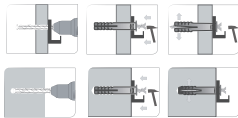
Ø	↗	Ø screw/long	🏠	Failure charge			REFERENCE #
				concrete	brick	hollow brick	
6	35	4 x 45	6	90	80	20	MXM-EP-006
8	42	4.5 x 50	8	180	100	45	MXM-EP-008
10	60	5 to 6	8	-	-	-	MXM-EP-010

**T-PLUG**



Ø	↗	Ø screw/long	🏠	Failure charge			REFERENCE #
				concrete	brick	hollow brick	
6	35	4	6	100	40	20	MXM-TP-006
8	42	4.5	8	180	60	45	MXM-TP-008
10	60	5	10	280	80	45	MXM-TP-010

**NYLON HAMMER PLUG**  
STANDARD OR LARGE HEAD



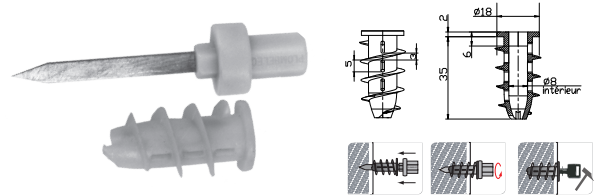
Ø	↗	Ø screw	🏠	Failure charge		REFERENCE #
				concrete	hollow brick	
5	30	5	5	90	90	MXM-NH-530
5	40	10	5	90	90	MXM-NH-540
5	50	25	5	90	90	MXM-NH-550
6	40	10	6	100	100	MXM-NH-640
6	50	20	6	100	100	MXM-NH-650
6	60	30	6	110	100	MXM-NH-660
6	80	50	6	110	100	MXM-NH-680
8	60	20	8	160	150	MXM-NH-860
8	80	40	8	160	150	MXM-NH-880
8	100	60	8	160	150	MXM-NH-8100
8	120	80	8	160	150	MXM-NH-8120

**NYLON HAMMER PLUG**  
WITH STANDARD HEAD



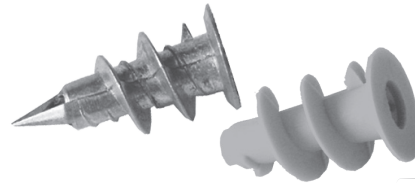
Ø	↗	Ø screw	🏠	Failure charge		REFERENCE #
				concrete	hollow brick	
10	80	7 x 85	10	550	360	MXM-NH-1080
10	100	7 x 105	10	550	360	MXM-NH-10100
10	120	7 x 125	10	550	360	MXM-NH-10120
10	140	7 x 145	10	550	360	MXM-NH-10140
10	160	7 x 165	10	550	360	MXM-NH-10160

**"INSERT" PLUG**



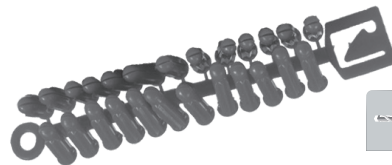
Ø	↗	Ø screw	🏠	REFERENCE #
8	37	M8	w/o drilling	MXM-IP-008

**SELF DRILLING PLUG**  
NYLON OR ZAMAC



version	↗	Ø screw	Ø screw round head	🏠	thickness	REFERENCE #
Nylon	23	w/o	5 x 30	w/o	15	MXM-SDP-N23
Zamac	30	with	5 x 30	w/o	15	MXM-SDP-Z30

**PLUGS**  
IN GRAPE



available colors:

Ø	↗	Ø screw	🏠	Failure charge			REFERENCE #
				concrete	brick	hollow brick	
2/5	25	-	6	50	40	10	MXM-PG-025
4/7 SP	30	3 à 4	8	60	50	20	MXM-PG-047
4/7	30	4 à 5	8	60	50	20	MXM-PGS-047
5/9	50	-	10	-	-	-	MXM-PG-059